

## Fisiología Celular

Célula Totipotencial.

Célula Pluripotencial.

Célula Unipotencial.

1

## Fisiología Celular

Célula Madre.

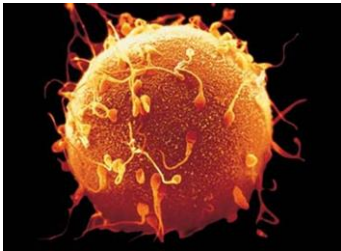
Célula Especializada.

Célula "Inmadura" - Célula "Madura"

Apoptosis.

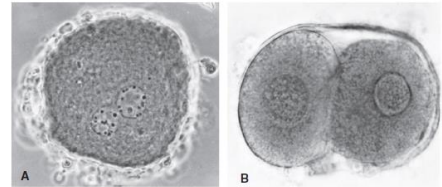
2

## Fisiología Celular



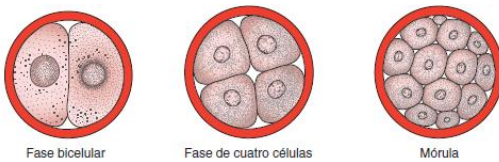
3

## Fisiología Celular



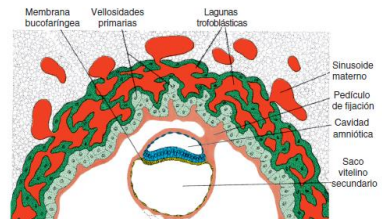
4

## Fisiología Celular



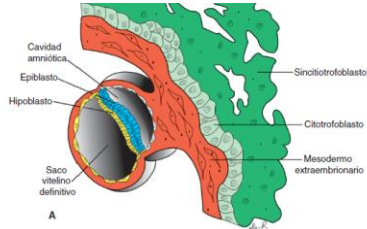
5

## Fisiología Celular



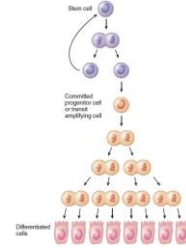
6

### Fisiología Celular



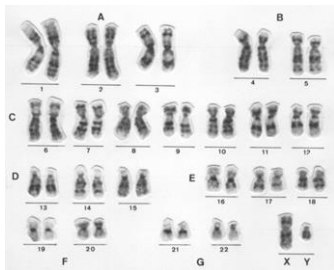
7

### Fisiología Celular



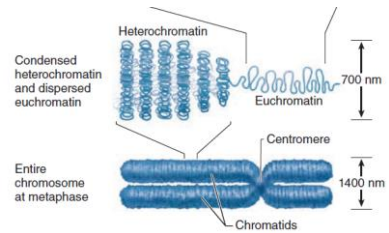
8

### Fisiología Celular



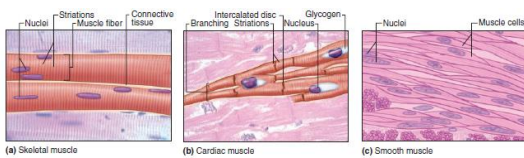
9

### Fisiología Celular



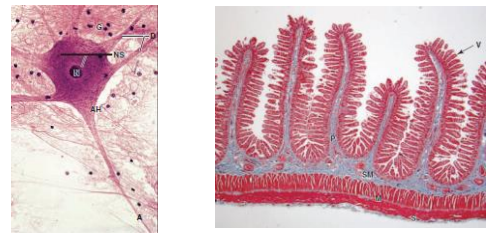
10

### Fisiología Celular



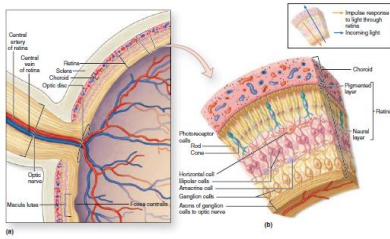
11

### Fisiología Celular



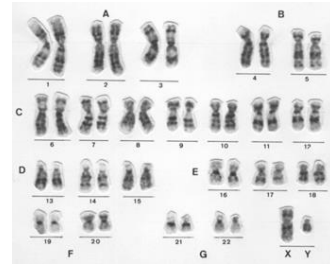
12

### Fisiología Celular



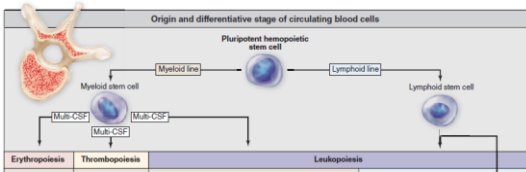
13

### Fisiología Celular

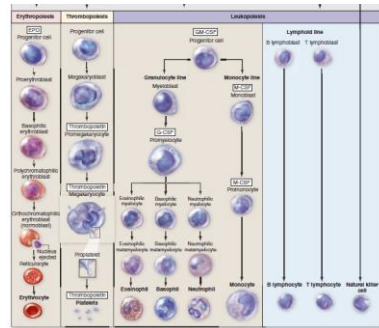


14

### Fisiología Celular



15



16

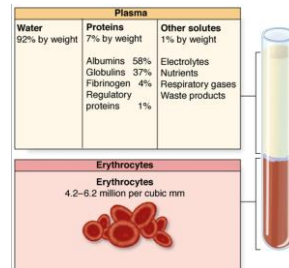
### Fisiología Celular

**FIGURE 13-3 Major changes in developing hemopoietic cells.**

	Stem Cells	Progenitor Cells	Precursor Cells (Blasts)	Mature Cells
Potentiality	High	Medium	Low	None
Self-renewing capacity	High	Medium	Low	None
Mitotic activity	Low	High	High	None
Typical morphologic characteristics	None	None	None	High
Influence of growth factors	None	High	High	None
Differentiated functional activity	None	None	None	High

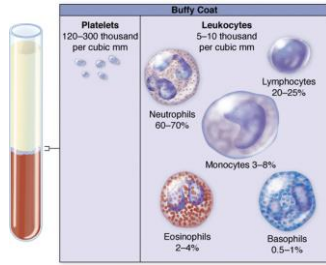
17

### Fisiología Celular



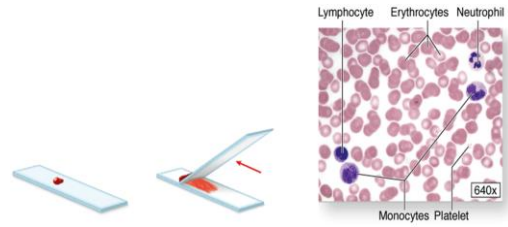
18

Fisiología Celular



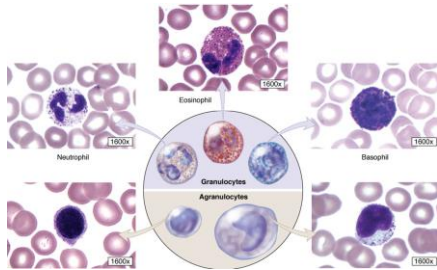
19

Fisiología Celular



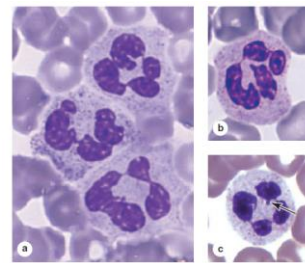
20

Fisiología Celular



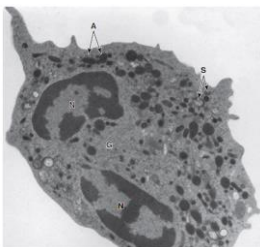
21

Fisiología Celular



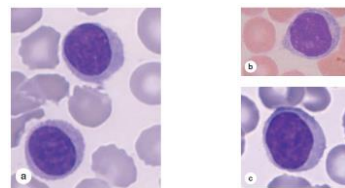
22

Fisiología Celular



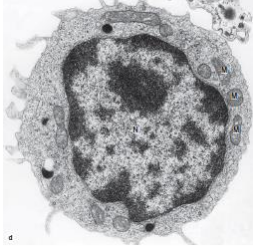
23

Fisiología Celular



24

Fisiología Celular



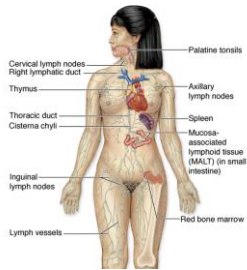
25

Fisiología Celular



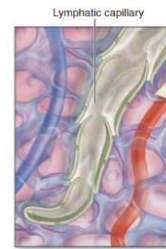
26

Fisiología Celular



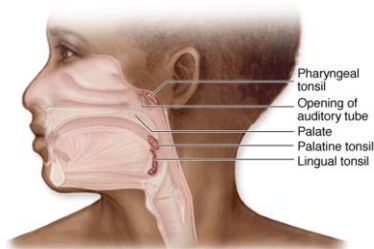
27

Fisiología Celular



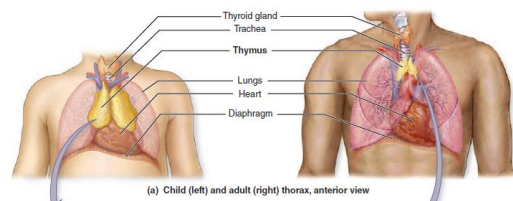
28

Fisiología Celular



29

Fisiología Celular



(a) Child (left) and adult (right) thorax, anterior view

30

